

SINCE 1911



**BIG BORE
NO MORE?**
Smaller
engines grow
in popularity

page 42

COERCION CAUTION
Has FMCSA's rule done any good?

page 48

HACKERS EYEING HAULERS

**How carriers can take precautions
against online attacks**

**TRAINING DAY
BEFORE WORK**

Driver onboarding
starting earlier

page 44

**CLEARINGHOUSE
CONFUSION**

When, why do fleets
need to register?

page 40



Battery chargers

EnerSys' Odyssey Battery Chargers are available in a range of 12-volt units rated at 35, 70 or 105 amps and are designed to fully and safely charge absorbed glass mat (AGM) and traditional flooded lead acid batteries. They are built to be either transported for ease and flexibility or wall-mounted for permanent operation. Each charger contains a 6-foot cable connected to the unit and a 4-foot removable cable with clamps. The 70- and 105-amp units also feature a programmable dashboard on a 4.3-inch color screen that displays charging status.

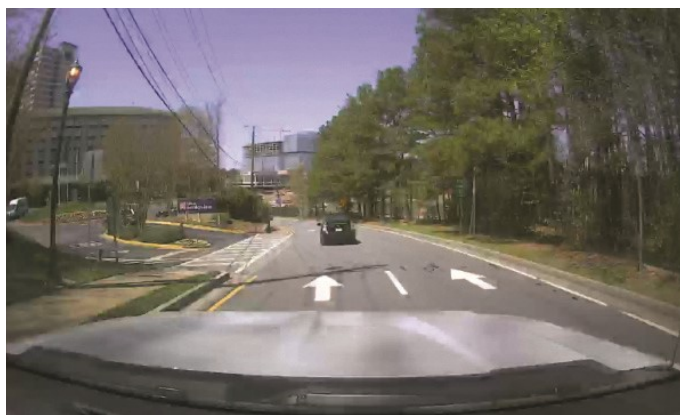
» EnerSys, www.enersys.com, 610-208-1991



Cable clamp

Phillips' multifunctional Qwik-Clamp is designed for securing hoses or cables to any support system between a tractor and a trailer. It converts from a 1-, 2- or 3-hose holder to a cable clamp for the company's 3-In-1 device by removing an insert. The clamp's secure draw latch is engineered to create a positive lock, keeping up to three cables or a 3-In-1 in place, staying connected at over 100 pounds of pull force. With the insert installed, the Qwik-Clamp supports straight ABS electrical cables and 3/8-inch rubber air hoses or coiled ABS electrical cables and nylon air lines with long leads. Without the insert, it is built to support all the company's 3-In-1 assemblies and other applications approximately 1.6-inch in diameter. The stainless-steel carabiner helps facilitate faster attachment of the clamp to a tender spring or pogo stick. The clamp body and insert are made of noncorrosive and UV-resistant durable nylon for added performance in extreme weather conditions with a working temperature of -40 to 150 degrees Fahrenheit.

» Phillips Industries, www.phillipsind.com, 800-423-4512



4G dashcam

NexTraq's Dashcam is a high-definition vehicle camera system designed to provide HD-video coverage with a wide-angle lens of the moments before, during and after an incident. The system is available with an optional second camera for an in-cab view, nine infrared LEDs for nighttime recording, real-time incident alerts with video and GPS location via email, and downloadable incident videos transmitted via 4G LTE connectivity.

» NexTraq, www.nextraq.com, 844-974-0563

ccj



Download the Imperial App today.



Fleet Maintenance Solutions for the Road Ahead

Imperial

888-838-6718
imperialsupplies.com