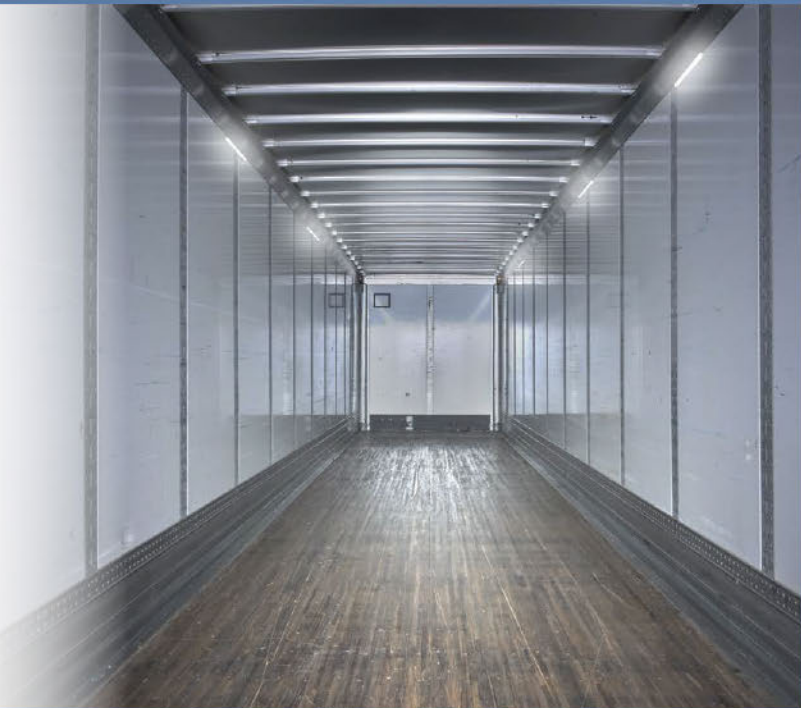


# PUT PHILLIPS IN YOUR CORNER

## PERMALITE™ XB CORNER CARGO LAMPS

*Finally,* A LIGHTING  
SOLUTION FOR DRY VANS!



### High Power Diodes

9 high power surface-mount diodes with a combination of spot and flood optics (5 flood and 4 spot)

### Lumen Output

1200 effective lumens

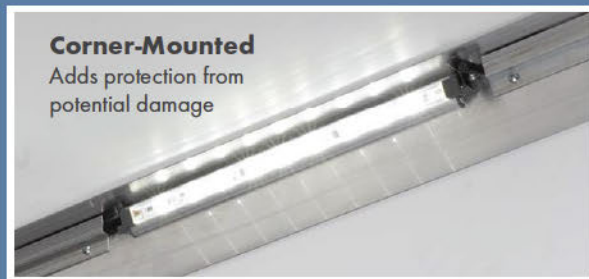
### Moisture-Proof Circuit Boards

Waterproof coating on circuit boards to protect from moisture



### PIR Sensor Compatibility

Can be used in conjunction with a PIR sensor (6 lamps max on one circuit)



### Best Light Projection

Angled for best light projection over the load and floor

### Flexible Mounting Locations

- Based on customer requirements, great for new and existing equipment
- No requirements for ceiling pan or conduit installation
- Great for dry vans or reefers

### Designed with 3 Wires

Allows daisy-chaining while minimizing voltage drop

### Simple Installation

6" wire leads with sealed bullet connectors for easy installation

WE MAKE PRODUCTS THAT MAKE A DIFFERENCE®

12070 BURKE STREET, SANTA FE SPRINGS, CA 90670  
800.423.4512 FAX 800.597.7757

# PHILLIPS

# CORNER CARGO LAMP SYSTEM

## CENTER CORNER CARGO LAMP



- 52-22641** Corner Cargo LED Lamp – 9 LEDs, 1200 lumens, dual-sided bulletted connections, individual retail
- 52-22644** Corner Cargo LED Lamp – 9 LEDs, 1200 lumens, dual-sided bulletted connections, bulk pack, qty 6

## LEFT CORNER CARGO LAMP



- 52-22741** Corner Cargo LED Lamp – 9 LEDs, 1200 lumens, left side bulletted connections, individual retail
- 52-22744** Corner Cargo LED Lamp – 9 LEDs, 1200 lumens, left side bulletted connections, bulk pack, qty 6

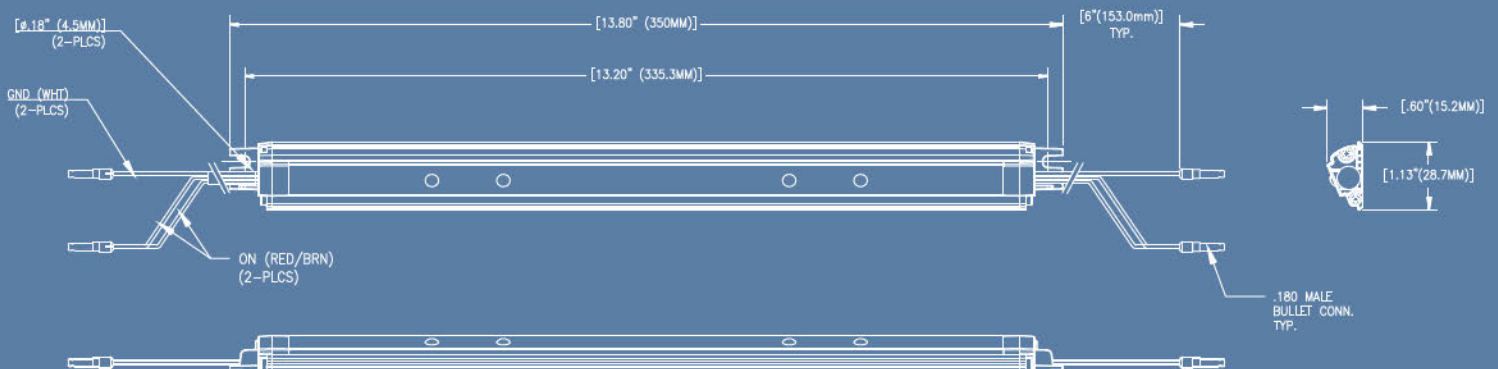
## RIGHT CORNER CARGO LAMP



- 52-22841** Corner Cargo LED Lamp – 9 LEDs, 1200 lumens, right side bulletted connections, individual retail
- 52-22844** Corner Cargo LED Lamp – 9 LEDs, 1200 lumens, right side bulletted connections, bulk pack, qty 6

Operating Voltage	10V - 12V DC
Current Draw (at 12.8V)	1.3A
Operating Temperature	-40°F to 150°F (-40°C to 65°C)
Lumens	1200
Lens	Clear Polycarbonate
Housing	Aluminum
Warranty	3 Years
Lighting Source	9 LEDs
Reverse Polarity Protection	Yes
.180 male bullet connectors	Yes

### 52-22641 / 52-22644



WE MAKE PRODUCTS THAT MAKE A DIFFERENCE®

12070 BURKE STREET, SANTA FE SPRINGS, CA 90670  
 800.423.4512 FAX 800.597.7757

**PHILIPS**