

# THE WEATHER-TITE™ M2 LIFTGATE ASSEMBLY

THE ONLY DUAL POLE PLUG CONNECTION WITH  
**SUPERIOR CORROSION PROTECTION**

**Avoid downtime due to corrosion and keep  
your liftgate cycling for on-time deliveries.**



## Exceptional Recoil Memory

Coil retention prevents sag, avoiding  
cable damage from deck plate



## Heavy-Duty Jacketing

Flexible from - 82°F to 195°F (- 63°C to 91°C)  
with excellent chemical and abrasion  
resistance

## Cable Guard Sleeve

Enhanced strain relief protection at the back of  
the plug for longer cable life



## Weather-Proof Plug

Unbreakable, non-corrosive housing  
which is completely molded to the  
electrical cable to combat against  
corrosion



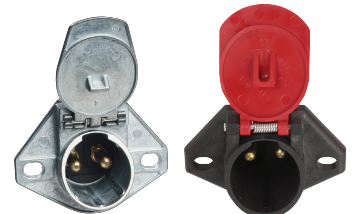
## Moisture Blocking Seal

Red WEATHER-TITE™ seal adds additional  
corrosion protection at the front of the plug  
by blocking moisture and contaminants from  
entering the electrical system through the  
coupled connection

## Common Standard Connection

Will work with any standard J3082  
zinc die-cast dual pole liftgate socket

For best corrosion prevention pair with  
Dual Pole QCS2®



Zinc Die-Cast

Dual Pole QCS2®

# WEATHER-TITE™ M2 Liftgate Assemblies

- For dual pole liftgate applications utilizing a trailer battery pack
- Features plugs that are unbreakable with non-corrosive housing which are completely molded to the electrical cable to combat against corrosion
- The WEATHER-TITE™ seal adds additional corrosion protection at the front of the plug by blocking moisture and contaminants from entering the electrical system through the coupled connection
- Cable guard sleeves enhance strain relief protection at the back of the plug for longer cable life
- 4 ga. 100 amp continuous capacity; 2 ga. 150 amp continuous capacity
- Flexible from - 82°F to 195°F (- 63°C to 91°C) with excellent recoil memory, chemical and abrasion resistance
- Meets J3082 standards

## Coiled Dual Pole WEATHER-TITE™ M2



LENGTH	2 GA.	4 GA.
12'	25-23276	23-23276
15'	25-26276	23-26276
15' with 48" lead	25-29276	23-29276

- Excellent recoil memory, chemical and abrasion resistance

## Straight Dual Pole WEATHER-TITE™ M2



LENGTH	2 GA.	4 GA.
12'	25-22576	23-22576
15'	25-22776	23-22776

- Excellent chemical and abrasion resistance

## M2 Charge Kit



LENGTH	2 GA.	4 GA.
15' with 48" lead	25-292769	23-292769

- A premium back-of-cab charging system that is the ideal solution for fast and easy set-up and best-in-class corrosion prevention
- Kit includes:
  - 15', with 48" lead WEATHER-TITE™ M2
  - 25" QWIK-CHANGE™ Tracker Spring Kit with QWIK-CLAMP™ for Charging Kits